

# PORT GDAŃSK



## Infrastructural Investments as a Key Factor to Increase Operational Efficiency



/portgdansk



/portgdansk



/portgdanskZMPG



/company/portgdansk



[www.portgdansk.pl](http://www.portgdansk.pl)







# Facts about the Port of Gdańsk

- Poland's largest sea port
- In 2017 r. Port of Gdańsk handled **40.6 million tonnes** (Polish maritime record)
- **46.5% share** in the Polish maritime market
- Ranked **4<sup>th</sup>** among the largest ports **on the Baltic Sea**
- Ranked **2<sup>nd</sup> on the Baltic Sea** in terms of the number of containers handled

# Hydrographic conditions



16.5 m

17 m

Port of Gdańsk

Service of the largest vessels entering the Baltic Sea



No tides



Ice-free port



# Hinterland of the Port of Gdańsk

**100 MILLION  
CONSUMERS**



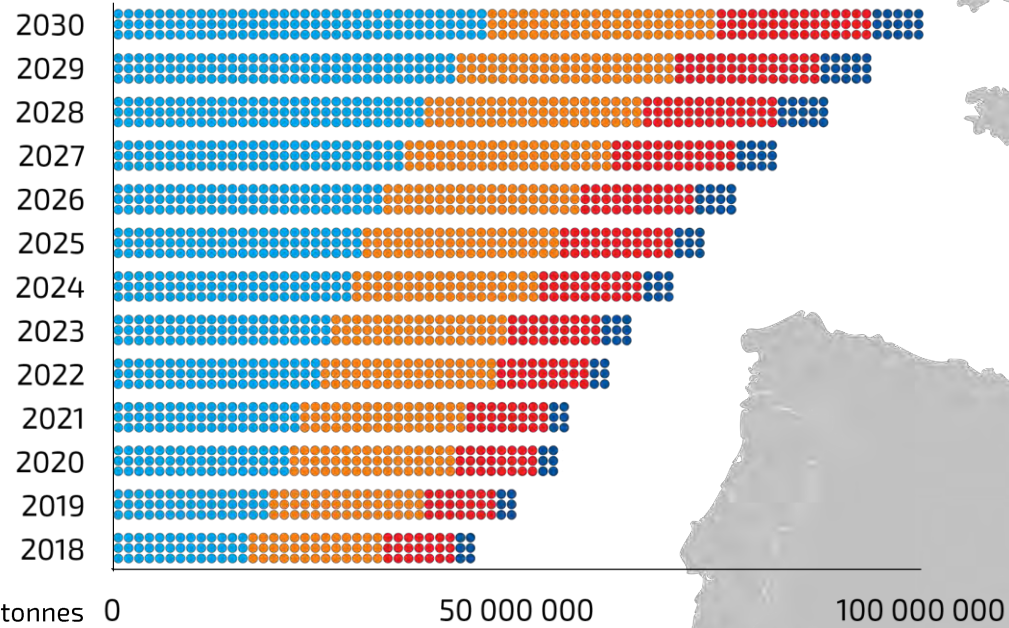


# Forecast for the Port of Gdańsk and its hinterland

# GDP+48%

Port of Gdańsk

Containers Liquid bulk Dry bulk Other general cargo

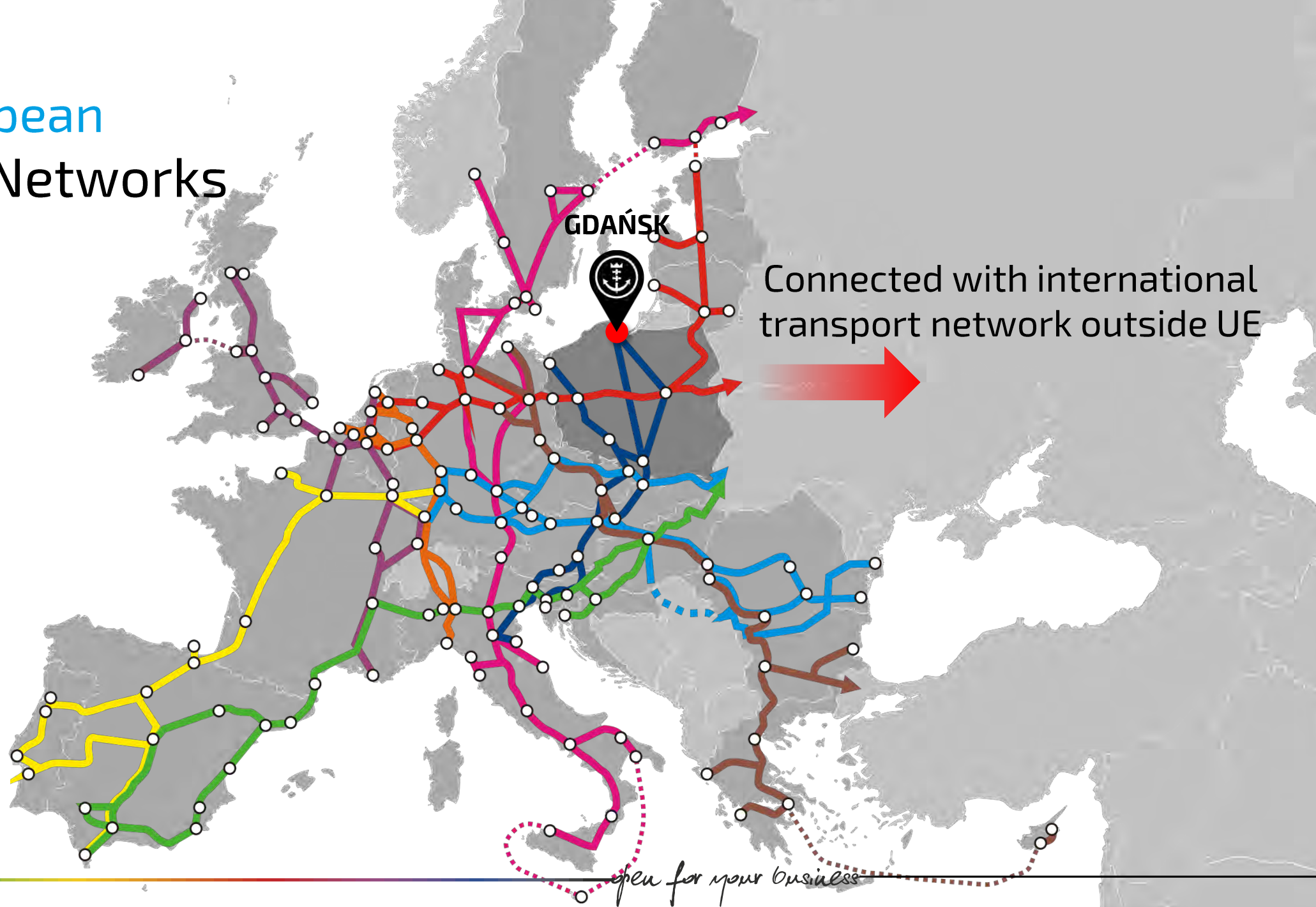


**PORT GDAŃSK**



*open for your business*

# Trans-European Transport Networks



Connected with international  
transport network outside UE

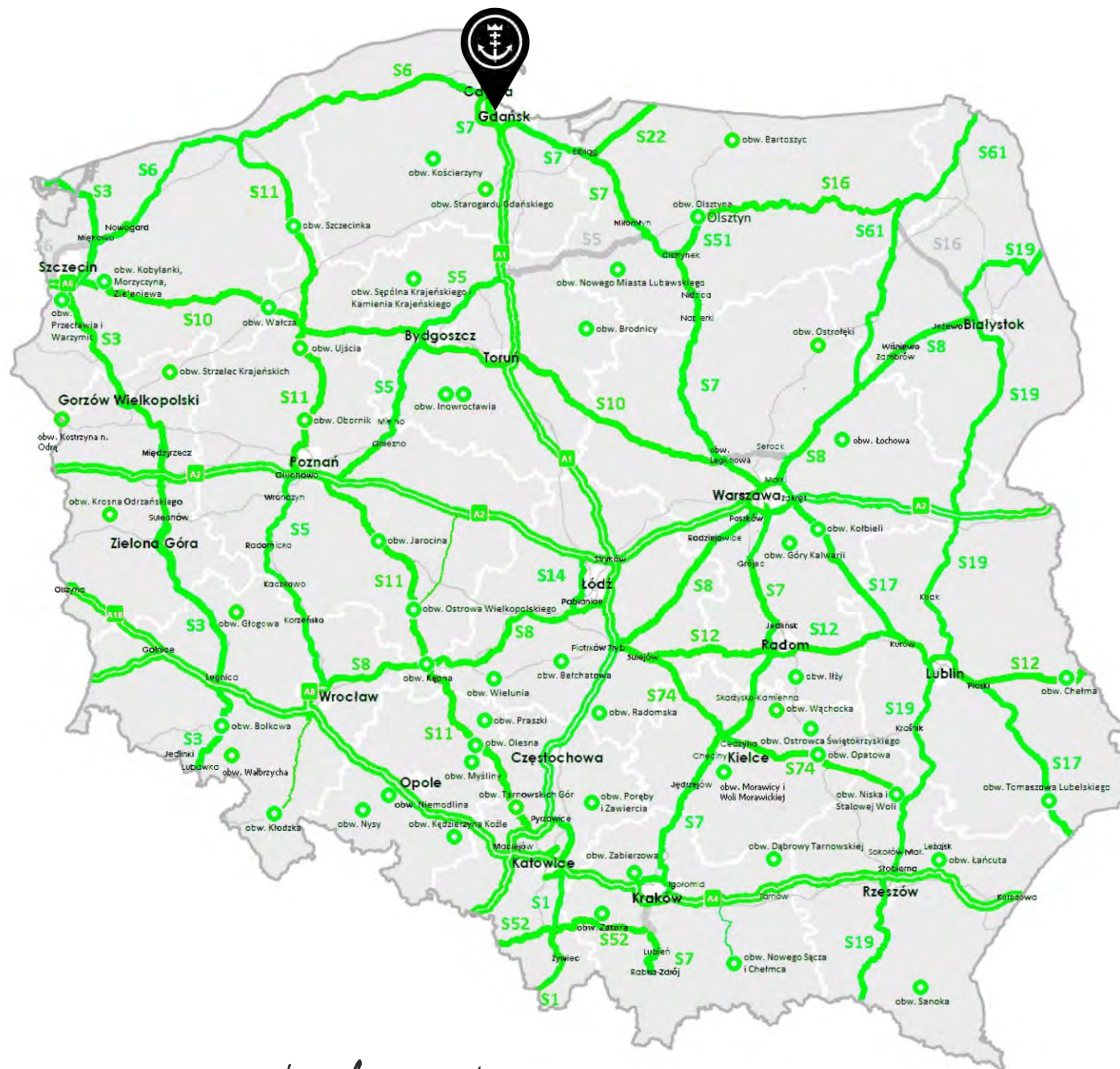


# Plan for the construction of expressways and highways until 2023

Total value of investments:  
ca. EUR 19 billion

Total length:

2018	2023
3,446 km	6,941 km

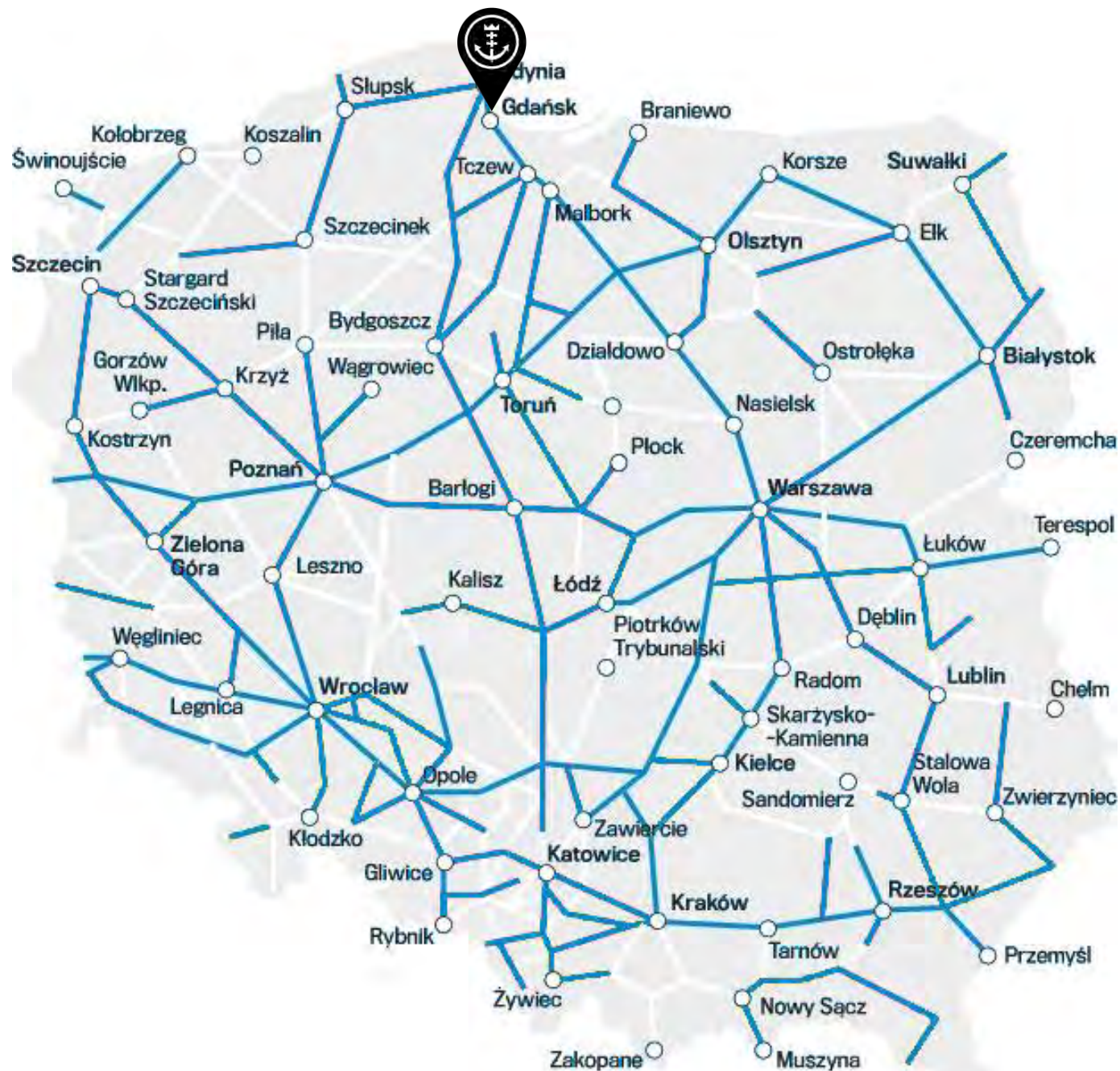


# National Railway Program until 2023

Total value of investments:  
ca. EUR 15.5 billion

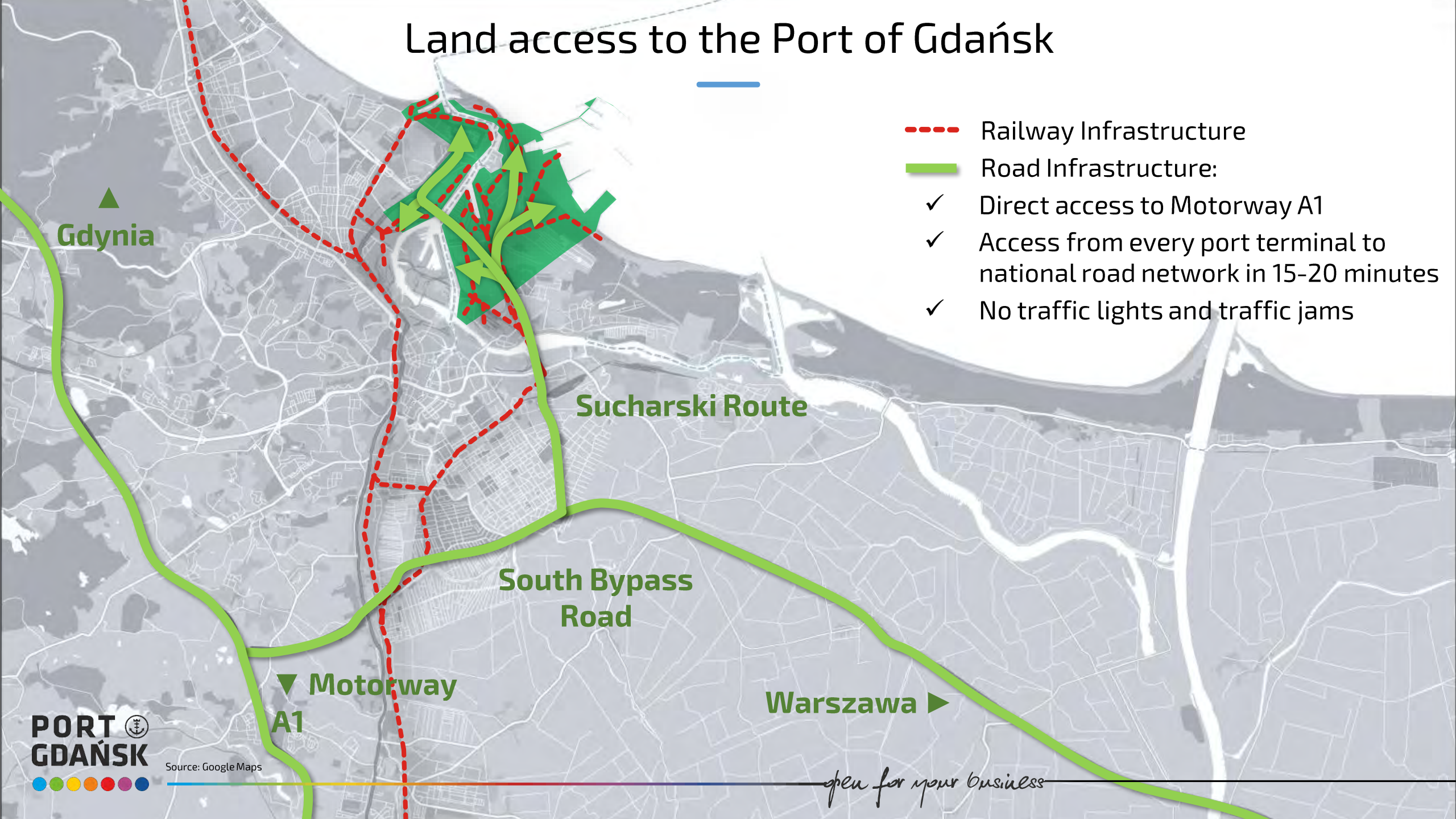
Total length  
of modernized railway lines in 2023:

ca. 18,000 km





# Land access to the Port of Gdańsk



- Railway Infrastructure
- Road Infrastructure:
  - ✓ Direct access to Motorway A1
  - ✓ Access from every port terminal to national road network in 15-20 minutes
  - ✓ No traffic lights and traffic jams

Gdynia ▲

Sucharski Route

South Bypass Road

▼ Motorway A1

Warszawa ►

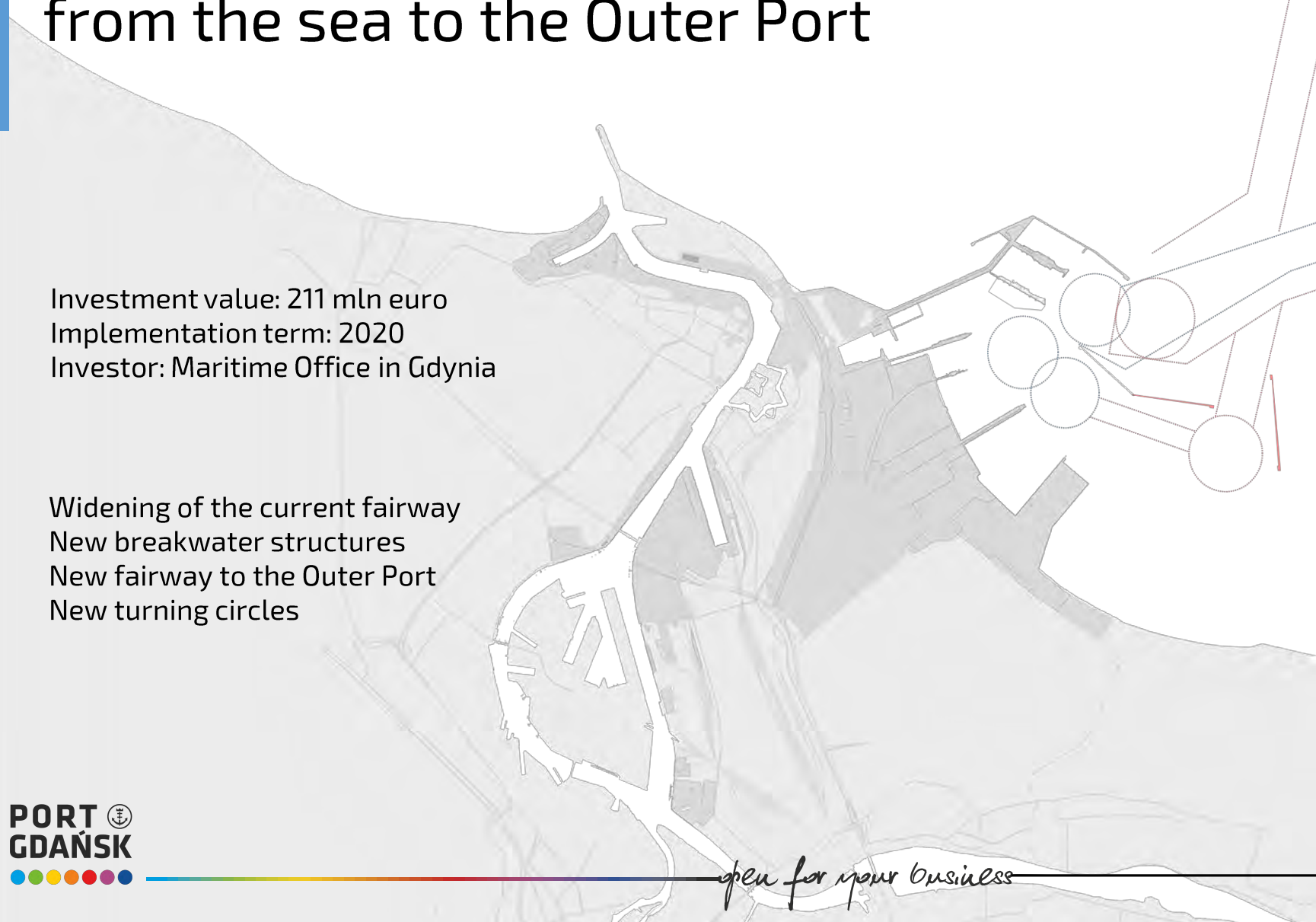




# Development of **access infrastructure** from the sea to the Outer Port

Investment value: 211 mln euro  
Implementation term: 2020  
Investor: Maritime Office in Gdynia

Widening of the current fairway  
New breakwater structures  
New fairway to the Outer Port  
New turning circles







Republic  
of Poland



Co-financed by the European Union  
Connecting Europe Facility

# Expansion and upgrade of **road and railway network** in the Outer Port in Gdansk

Investment value: 28.8 mln EUR  
EU financing: 85%  
Implementation term: 2020

Scope of road work – modernisation,  
redevelopment, and construction of about  
5.6 km of roads

Scope of railway work – modernisation,  
redevelopment, and construction of 9.7 km  
of railways



Republic  
of Poland



Co-financed by the European Union  
Connecting Europe Facility

# Expansion of quays and the dredging of a fairway in the Inner Port

Investment value: 110.3 mln euro  
EU financing: 85%  
Implementation term: 2020

## Maximum ship specifications:

- Length = 250 m
- Width = 35 m
- Draft = 10.6 m





Republic  
of Poland



Co-financed by the European Union  
Connecting Europe Facility

# Expansion of **Northern Quay** at the Peninsular Breakwater in the Port of Gdańsk

Investment value: 99.6 mln EUR  
EU financing: 20%  
Implementation term: 2021

Total length of quay – 1000 m  
2 operational berths for ships

Ship length – 250 m

Ro-Ro ramp width – 32.9 m

Max. draft – 12.6 m





# The Central Port concept



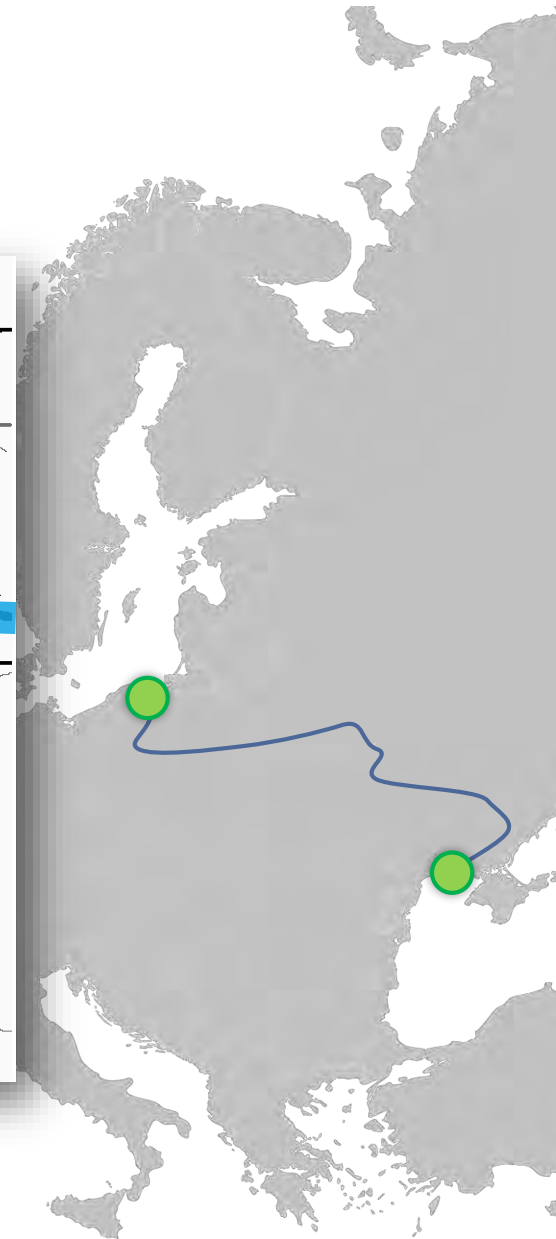
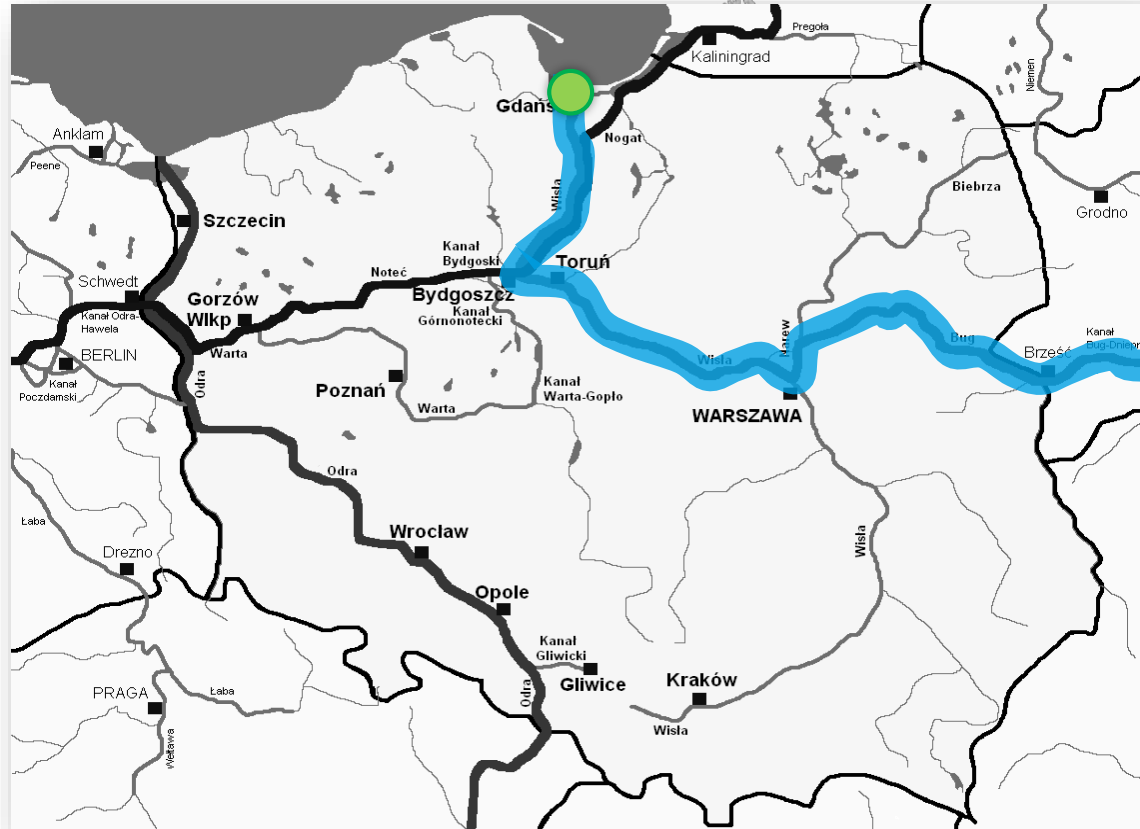
- Target area approx. 500 ha
- 5 to 8 terminals
- Target capacity ~ 85 million t
- Handling the world's largest ships
- Execution as part of a public-private partnership
- Investment value – ca. 1 to 2 billion EUR

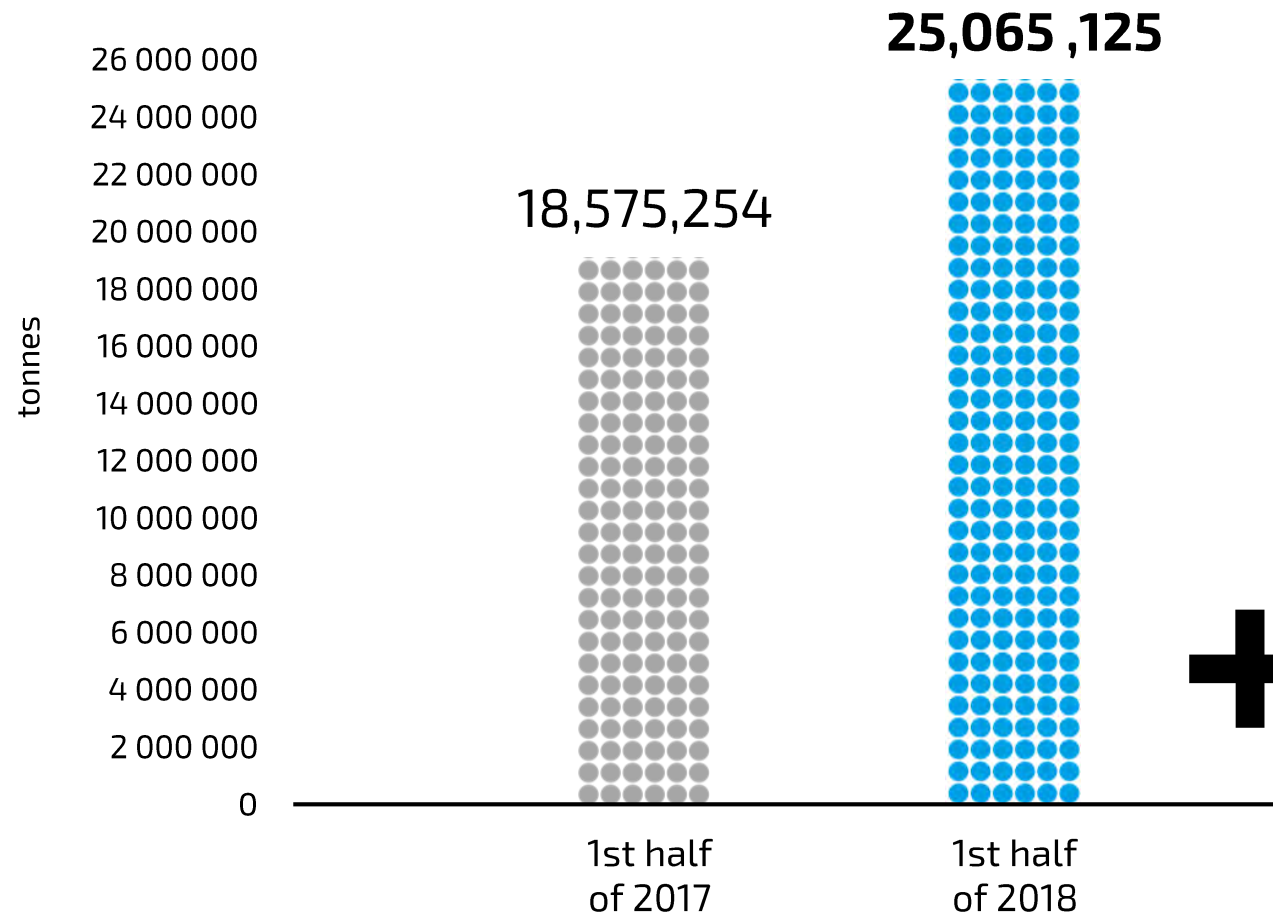


# Ensuring navigability of the **Vistula River**

**E40**

Baltic Sea (Gdańsk) –  
Black Sea (Odessa)





**+35%**

*Thank you for your attention*



# **3<sup>rd</sup> Baltic Ports and Shipping**

Courtyard by Marriott Gdynia Waterfront  
Poland  
22<sup>nd</sup>-24<sup>th</sup> October 2019